

2016 *Calendar*

Timber Home Living
timberhomeliving.com

sponsored by



NEW ENERGY WORKS
design | timberframing | woodworks
newenergyworks.com





Remodeling a timber frame home near Portland, Oregon was the meal. Adding this outdoor living and dining area (also seen on the front cover), was the dessert. Industrial as-found timbers, artisan concrete, an arbor to connect to the home, and views from heaven make for a satisfying and complete menu.

"The NEW team came in and walked us through the process to create a home of peace and beauty. There is not a day that goes by where we are not overwhelmed with gratitude for what our home has become."
- Daniel & Sheri

SUNDAY	MONDAY	TUESDAY	WEDNESDAY	THURSDAY	FRIDAY	SATURDAY
		1	2	3	4	5
6 Hanukkah Begins at Sundown	7 Pearl Harbor Remembrance Day	8	9	10	11	12
13	14 Hanukkah Ends at Sundown	15	16	17	18	19
20	21	22 First Day of Winter	23	24 Christmas Eve	25 Christmas Day	26 Boxing Day (Canada) Kwanzaa Begins
27	28	29	30	31 New Year's Eve	Timber Home Living timberhomeliving.com	



Size: 560 sq. ft.
Location: West Linn, OR
Architect: New Energy Works
 585.924.3860 | newenergyworks.com
Builder: New Energy Works
 585.924.3860 | newenergyworks.com
Reclaimed Wood: Pioneer Millworks
 585.924.9970 | pioniermillworks.com

2015
December



NEW ENERGY WORKS
 design | timberframing | woodworks





Along the Lakeshore

This lakeside home is the second timber frame we've raised for a couple on Canandaigua Lake. It is crafted of reclaimed Douglas fir timbers sourced by Pioneer Millworks from the United Embroidery factory in NJ. We recreated many of the details from the homeowners' first home, including all of the reclaimed wine vat stock interior doors. Other details include antique oak flooring, a live edge island top, and custom built-ins.

"Everyone we worked with at New Energy Works was warm and professional. We would not have the special home we have today without the guidance and workmanship of the wonderful N.E.W. teams."

- Jackie & Sal

SUNDAY

MONDAY

TUESDAY

WEDNESDAY

THURSDAY

FRIDAY

SATURDAY

Timber Home Living
timberhomeliving.com

						1	2
3	4	5	6	7	8	9	
10	11	12	13	14	15	16	
17	18 Martin Luther King Day	19	20	21	22	23	
24	25	26	27	28	29	30	
31							

Size: 4,933 sq. ft. **Location:** Canandaigua, NY

Architect: James Fahy Design Associates

585.272.1650 | jamesfahy.com

Builder: @ Home Builders

585.232.1000 | athomebuilders.com

Reclaimed Wood: Pioneer Millworks

585.924.9970 | pioneermillworks.com

Fine Woodworking: NEW woodworks

585.289.4840 | newwoodworks.com

2016
January



NEW ENERGY WORKS
design | timberframing | woodworks





Deerfield Country Club

When Paul and Claudia acquired Deerfield Country Club, they committed to restoring the legacy and facilities of the well-known course. The existing 28,000 square foot clubhouse was renovated to include modern ballrooms, a new bar-restaurant, a timber framed porte cochere, and a trellis for golfers and wedding parties alike. New exterior porches engage the landscape and frame fairway views. 16" x 16" Douglas fir posts and 12" x 12" beams were rough sawn and custom finished to create a warm and welcoming atmosphere.

SUNDAY	MONDAY	TUESDAY	WEDNESDAY	THURSDAY	FRIDAY	SATURDAY
	1	2 Groundhog Day	3	4	5	6
7	8	9	10	11	12	13
14 Valentine's Day	15 Presidents' Day	16	17 Ash Wednesday	18	19	20
21	22	23	24	25	26	27
28	29					



Location: Brockport, NY
Architect: New Energy Works
 585.924.3860 | newenergyworks.com
Builder: Mark Johnson
 585.732.3566 | markjohnsoncustomhomes.com
Engineer: Apex Engineering Services
 406.541.2739 | apexengs.com
Landscape: Mike Lemcke
 540.760.7799

2016
February

NEW ENERGY WORKS
 design | timberframing | woodworks





House of 6 Gables

Three gables along each side of this home keep with the local historic charm of the Cape Cod neighborhood while opening the opportunity for a complex timber roof system. We previously crafted a studio for these homeowners and while the frame is similar, this second project has a longer span and more shallow pitch calling for glulam ridge beams with matching grain. Each room of the home is oriented to views of the water and encourages inhabitants to enjoy multiple exterior living spaces. A3 Architects are aiming for Net Zero with this home.

SUNDAY	MONDAY	TUESDAY	WEDNESDAY	THURSDAY	FRIDAY	SATURDAY
		1	2	3	4	5
6	7	8	9	10	11	12
13 Daylight Saving Time Begins	14	15	16	17 St. Patrick's Day	18	19
20 First Day of Spring	21	22	23 Purim Begins at Sundown	24	25 Good Friday	26 Passover Begins at Sundown
27 Easter	28 Easter Monday (Canada)	29	30	31	Timber Home Living timberhomeliving.com	

Size: 3,840 sq. ft.

Location: East Dennis, MA

Architect: A3 Architects
508.694.7887 | a3architectsinc.com

Builder: Brian Shanahan
508.360.3567 | brianwshanahan.com

Engineer: Fire Tower Engineering
401-654-4600 | ftet.biz

2016 March



NEW ENERGY WORKS
design | timberframing | woodworks



Photos courtesy of Marcus Gleysteen Architects



Comfort &
Function

A timber and stone service barn is not only the central utility hub for the farm but includes guest quarters, space for entertaining, and a studio. The upper level offers a way to experience the farm from a different point of view. The design pays homage to traditional bank barns providing easy entry to the upper level and ample lower level storage. The frame celebrates a principal purlin system with common rafters, a classic form of barn construction.

SUNDAY

MONDAY

TUESDAY

WEDNESDAY

THURSDAY

FRIDAY

SATURDAY

Timber Home Living
timberhomeliving.com

						1	2
3	4	5	6	7	8	9	
10	11	12	13	14	15	16	
17	18	19	20 Earth Day	21	22	23	
24	25	26	27	28	29	30	

Size: 2,028 sq. ft.

Location: Waltham, MA

Architect: Marcus Gleysteen Architects

617.542.6060 | mgaarchitects.com

Blackburn Architects, P.C.

202.337.1755 | blackburnarch.com

Builder: Kenneth Vona Construction

781.890.5599 | kenvona.com

2016
April



NEW ENERGY WORKS
design | timberframing | woodworks





When the lot faces south and the view is of Mount Hood, only great design should result. This 3600 square foot home encompasses one floor living with a tower room for getting away and a garden level for guests. Natural material, intimate volumes, and local craftsmanship make living here easy.

"It has been a great ride! Once we got into the timber raising, your crew showed their colors. They were fun to watch and talk to - a great bunch. What a good adventure for us...wow, it is a real cool house. I will cut this short since I could go on and on. Thanks for your passion and help and guidance."

- Jim and Pam

SUNDAY	MONDAY	TUESDAY	WEDNESDAY	THURSDAY	FRIDAY	SATURDAY
1	2	3	4	5	6	7
8 Mother's Day	9	10	11	12	13	14
15	16	17	18	19	20	21 Armed Forces Day
22	23 Victoria Day (Canada)	24	25	26	27	28
29	30 Memorial Day	31				

Size: 3,600 sq. ft.

Location: Husum, WA

Architect: New Energy Works

585.924.3860 | newenergyworks.com

Builder: Todd Hill, Earthwood Construction

541.490.4666 | earthwoodllc.com

Reclaimed Wood: Pioneer Millworks

585.924.9970 | pionermillworks.com

2016
May



NEW ENERGY WORKS
design | timberframing | woodworks



Photos courtesy of Tim Williams Photography Inc.



Timber abounds in this preeminent private equestrian farm, part of a complex of family homes and outbuildings. A handful of Olympic and internationally competitive hunter and jumper horses call the timber frame stables home. The time-tested timber construction provides a more natural, durable, and relaxing environment for the equine inhabitants. A trophy room and lounge area provide space to rest between rides, and for guests to enjoy the activity of the farm around them.

SUNDAY	MONDAY	TUESDAY	WEDNESDAY	THURSDAY	FRIDAY	SATURDAY
Timber Home Living timberhomeliving.com			1	2	3	4
5	6	7	8	9	10	11
12	13	14 Flag Day	15	16	17	18
19 Father's Day	20 First Day of Summer	21	22	23	24 St. John Baptiste Day (Canada)	25
26	27	28	29	30		



Size: 15,433 sq. ft.
Location: Newtown, CT
Architect/Builder: PH Architects, LLC
203.426.6500 | ph-archs.com
Engineer: John Treybal
802.497.1174 | sts-engineers.com

2016
June


NEW ENERGY WORKS
design | timberframing | woodworks



Photo by Meghann Gregory Photography



Beantown Living

To create a 'light' timber look and feel, we crafted split scissor chord trusses with a rough sawn and whitewashed finish for this small-town Massachusetts great room. Unique details are hidden throughout the project, including architectural remnants from historic and private properties in the Boston area: old church windows, a reclaimed barn door, antique door knobs, and even a 'truth window' making visible timber joinery otherwise hidden in a wall cavity.

"Wow. The process was fun, collaboration was tremendous. You achieved exactly what we had in our minds - superb workmanship yet casual and welcoming; new but a nod to old and post and beam that didn't go 'country'. The onsite crew was great - clearly good at what they do and very welcoming to an audience of amazed onlookers. We really appreciate all the effort and caring you put into making this happen."

- Steve & Denise

SUNDAY	MONDAY	TUESDAY	WEDNESDAY	THURSDAY	FRIDAY	SATURDAY
 timberhomeliving.com					1	2
					Canada Day (Canada)	
3	4	5	6	7	8	9
	Independence Day					
10	11	12	13	14	15	16
17	18	19	20	21	22	23
24	25	26	27	28	29	30
31						

Size: 3,500 sq. ft.

Location: Natick, MA

Architect: D. Michael Collins Architects

508.651.7099 | dmcarch.com

Builder: Apple Hill Woodworks, Inc.

978.386.7737 | foamrun.com

Engineer: Fire Tower Engineering

401.654.4600 | ftet.biz

2016 July



NEW ENERGY WORKS
design | timberframing | woodworks



Break Room Retreat

Located near downtown Rochester this project put a contemporary twist on timber framing by combining elements of pavilion, trellis, and pergola designs. The resulting space serves as break room, gathering space, lunch room, and more with its relaxed open style. Employees can enjoy nature through large windows and doors that open to the exterior spaces. The radio frequency dried Douglas fir timbers are oversized to accommodate heavy snow common to upstate NY.

"Dike and our many great subcontractors including New Energy Works poured their heart and soul into this project. Great Design + Great Build = Great Design/Build. We really enjoyed the teamwork and getting the best results through early collaboration, and most importantly, are excited the customer is happy. Well done."

-Patrick Rogers, The Dike Company

SUNDAY	MONDAY	TUESDAY	WEDNESDAY	THURSDAY	FRIDAY	SATURDAY
	1	2	3	4	5	6
7	8	9	10	11	12	13
14	15	16	17	18	19	20
21	22	23	24	25	26	27
28	29	30	31			

Size: 1,000 sq. ft.

Location: West Henrietta, NY

Architect: HBT Architects
585.586.0490 | hbtarchitects.com

Builder: The Pike Company
585.271.5256 | pikeco.com

2016 August



NEW ENERGY WORKS
design | timberframing | woodworks





Hudson Sunrise

This family home's design is our take on a popular timber frame three bay layout. The great room is the central core and anchor of the home flanked by kitchen/bath and the master bedroom suite with additional rooms for the kids and guests tucked into the second level. Our construction team enclosed the frame using our Matrix Wall™ System, Structural Insulated Panel (SIP) roof, and custom windows. A walnut entry door with sidelights and multi-species staircase were crafted and fitted to the frame by our fine woodworking group. This home has inspired the neighboring property owners to raise their own frame – if you travel down the Hudson River today you can view a series of our work.

SUNDAY	MONDAY	TUESDAY	WEDNESDAY	THURSDAY	FRIDAY	SATURDAY
Timber Home Living timberhomeliving.com				1	2	3
4	5 Labor Day	6	7	8	9	10
11 Grandparent's Day Patriot Day	12	13	14	15	16	17
18	19	20	21	22 First Day of Autumn	23	24
25	26	27	28	29	30	



Size: 3,160 sq. ft.
Location: Saugerties, NY
Architect: New Energy Works
585.924.386 | newenergyworks.com
Builder: Homeowner
Fine Woodworking: NEW woodworks
585.289.4840 | newwoodworks.com

2016
September



NEW ENERGY WORKS
design | timberframing | woodworks



Photos: Alon Koppel



Existing stone walls provided the perfect base to fit this outdoor pavilion-inspired living space. Painted to match the trellis, the timbers were further embellished with elegant lambs-tongue chamfering, offset by contrasting oiled Douglas fir ceiling tongue & groove. Clipped gables offer protection from the elements and a visually pleasing roofline.

"I was really impressed with the professionalism of New Energy Works' crew and the quality of the company's work. Their team raised the frame smoothly and efficiently - these guys know what they're doing! All in all, a great experience with a top notch product."
 - Bob, R&L Home Improvement



SUNDAY	MONDAY	TUESDAY	WEDNESDAY	THURSDAY	FRIDAY	SATURDAY
						1
2 Rosh Hashanah Begins at Sundown	3	4	5	6	7	8
9 Yom Kippur	10 Columbus Day Thanksgiving Day (Canada)	11 Yom Kippur Begins at Sundown	12	13	14	15
16	17	18	19	20	21	22
23	24	25	26	27	28	29
30	31 Halloween					

Size: 580 sq. ft.
Location: Bedford, NY
Architect: Andrew Chary Architect, PLLC
 518.523.5727 | chary.com
Builder: R&L Home Improvements
 845.298.7054
Engineer: Apex Engineering Services
 406.541.2739 | apexengs.com

2016
October

NEW ENERGY WORKS
 design | timberframing | woodworks





Sage Brush Lodge

This home was designed and built as one of a complex of projects for a very prominent philanthropic family. Extended family members from across the country visit the expansive site for special holidays and to experience the mountain region. Affectionally referred to as the 'everything truss', the truss design for this home incorporates a variety of styles including king and queen posts, and curved struts and braces.

SUNDAY	MONDAY	TUESDAY	WEDNESDAY	THURSDAY	FRIDAY	SATURDAY
		1	2	3	4	5
6	7	8	9	10	11 Veteran's Day Remembrance Day (Canada)	12
13	14	15	16	17	18	19
20	21	22	23	24 Thanksgiving Day	25	26
27	28	29	30			

Location: Aspen, CO

Architect: Poss Architecture
585.924.3860 | billposs.com

Builder: Shaw Construction LLC
303.825.4740 | shawconstruction.net

Timber Frame: New Energy Works
585.924.386 | newenergyworks.com

2016 November



NEW ENERGY WORKS
design | timberframing | woodworks





A remodel of an existing home added character and history with reclaimed agricultural timbers and custom woodworking. Timbers over the dining area, great room, and bar were salvaged from dilapidated barns in the Northeast by Pioneer Millworks. Care was taken to maintain the original surfaces on the old timbers while new joinery was cut and fitted by hand. Offsetting the clean, bright tones of the great room, an adjoining bar was crafted by NEW *woodworks* of richly toasted oak. Our craftsmen also built an oak dining table inspired from classic picnic table designs while a traditionally styled kitchen companion was made from locally reclaimed wine vat stock.

SUNDAY	MONDAY	TUESDAY	WEDNESDAY	THURSDAY	FRIDAY	SATURDAY
Timber Home Living timberhomeliving.com				1	2	3
4	5	6	7 Pearl Harbor Remembrance Day	8	9	10
11	12	13	14	15	16	17
18	19	20	21	22 First Day of Winter	23	24 Hanukkah Begins at Sundown Christmas Eve
25 Christmas Day	26 Boxing Day (Canada) Kwanzaa Begins	27	28	29	30	31 New Year's Eve

Location: Mendon, NY
Architect: Patrick Morabito, AIA
585.264.1330 | pjmarchitect.com
Builder: Danrich Homes
585.223.4770 | danrichhomes.net
Reclaimed Wood: Pioneer Millworks
585.924.9970 | pioneermillworks.com
Fine Woodworking: NEW *woodworks*
585.289.4840 | newwoodworks.com

2016
December


NEW ENERGY WORKS
design | timberframing | woodworks

DESIGN

Every project is individual and begins with your dream, your budget, your needs and goals.

At New Energy Works, we remain committed to very personal and custom home design. We work with incredibly skilled architects and designers all over the country. These partners have brought us new ideas, different backgrounds, and great clients we wouldn't otherwise have met. We're thrilled with this collaboration.

For those who prefer a more integrated, one-stop approach, we have an in-house architectural studio. Design is a process, not a product and after more than 30 years in business, we feel the best design process includes:



Tools of the trade. We work in traditional methods such as hand sketching (particularly early on) and more high-tech ways as we 3D computer model your home and take virtual tours – this is where the fun really begins!

High Performance. We design and build with environmental impact and the best energy efficiencies in mind. From energy modeling to the latest advances in airtight detailing, we know what buttons to push to get the most out of your home.

Integration. We're timber framers, designers, builders, and woodworkers. An open office and cozy quarters means a free-flow of information. Come visit us and you'll see what we mean.

Experience. You get the benefit of all we have learned over the years, and what's in our DNA.

Big plans. In the end, we'll have produced full construction documents (way more than just floor plans) on that iconic large-format "blueprint" paper.

Vision. We have always said that our job as designers is to draw out your vision – of your home and design.

Conversations. Good communication is the foundation of a successful project. We know what questions to ask and there's lots of back and forth. We're likely to know you better than you know yourself by the time your frame is raised!

Site visits. The land has much to offer and teaches us how to design and build. We love seeing the potential in an open field, a forest, or a cliff side.



Throughout this process, you will begin to see your vision coming to life, and at the end you'll have all the details and drawings you need to build your home. You'll be part of our extended family. We're already excited to help make your amazing project a reality!

BUILD

Good design is made excellent by exceptional building systems, practices, and materials. Whether we're your general contractor or not, our construction group is an important part of who we are. Some of the finest craftsmen in their field, they've been building jaw-dropping homes for years and are just plain easy to get along with.

High performance enclosures are our thing. Once your frame is up, getting it "dried in" becomes the next priority. We often say that enclosing our timber frames is like "throwing a blanket over a piece of furniture," where the woodwork and structure is cozy and protected within, and the weather is kept out. Our construction team regularly follows our frames around the block and across the country to complete this next critical component of the building process.

We use stress skin and structural insulated panels (SIPs) and our own Matrix Wall™ pre-panelized system. SIPs are the workhorses of the industry and we've installed over a million square feet across the nation. The roof panels we like to use are made of expanded polystyrene sandwiched between sheathing and offer an unbroken layer of up to R-50 insulation.

On the sidewalls, we either use SIPs or our Matrix Wall system. Our Matrix Wall weighs in around R-32, and gives you the best of both worlds: it breaks the thermal bridge between the interior and exterior, like a SIP, and gives flexibility for installation of building systems like a conventional wall.

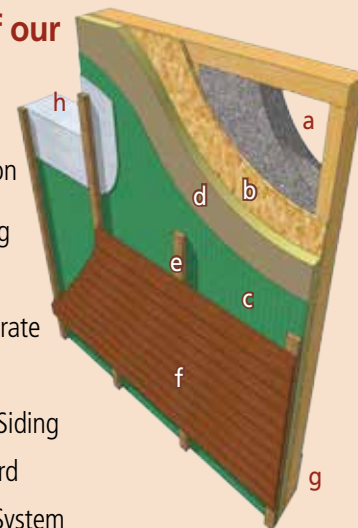
There are other high performance options for the roof and wall system, and we are always trying something new. Whether it's a double wall system that eclipses R-45, 18" deep roof system nearing R-60, or a variety of cutting edge smart membranes, we like to push the envelope (pun intended). Help us understand your goals, and we'll design and build a solution.

Following enclosure of outer walls, roof, windows, advanced housewraps and air barriers, tapes and sealants, if you have chosen our Enclose and Test™ services, we will work with you to come up with a testing program that will show any air-leaky areas that can be remedied during the build. Our current project tests for air-tightness have far outdone code standards and Energy Star, nearing ideal Passive House levels. Next year we're looking forward to featuring our first completed Net Zero home, so stay tuned!



Components of our Matrix Walls

- a** Wet-spray Cellulose Insulation
- b** 1/2" OSB Sheathing
- c** House Wrap
- d** 1 1/2" Polyisocyanurate
- e** 1x2 Strapping
- f** Reclaimed Wood Siding
- g** Gypsum Wall Board
- h** Flexible Flashing System



NEWwoodworks

If you're the kind of person who feels investing in a custom home is not just a matter of style but a statement about your values, then you are probably already thinking about the effect your cabinetry, stairs, doors and furniture can have on the overall quality of the project.

Based on these principles NEWwoodworks, our fine woodworking group, was established. Now well into their second decade, this group is 16 people strong with a 15,000 sq. ft. wood shop, and a dossier of clients that reaches outside the realm of timber framing, a community that includes gifted builders, design professionals, and clients across the nation. Our interior woodworking results from skilled hands, digital and CNC technology, and good-old-fashioned creativity.

We liken timber framing to 'furniture you live in' and we've found that it is best complemented with fine crafted woodworking.



Offering cabinetry, doors, stairs, furniture and custom designs.

newwoodworks.com | 585.289.4840

TIMBERS WITH A STORY TO TELL

Nearly 30 years ago our original shop collapsed under a heavy snow. As we were digging out, our clients, an English couple, asked if we could reuse the fallen timbers for the cabin we were building them. To everyone's delight, we did. Soon after, our sister company, Pioneer Millworks was born.

24 million board feet of reclaimed wood later, Pioneer Millworks is one of the most recognized reclaimed wood companies in the world. They've salvaged wood from industrial buildings, canal locks, bridges, food and wine vats, agricultural buildings and more. All manufactured from their Oregon and New York shops in a way that is healthy for customers, employees, and the planet. Their structural and decorative timbers, paneling, siding, flooring, and custom products are sought after by our fellow timber framers, and found in fine and funky retail shops, hotels, restaurants, and homes. Imagine the story your reclaimed project will tell.



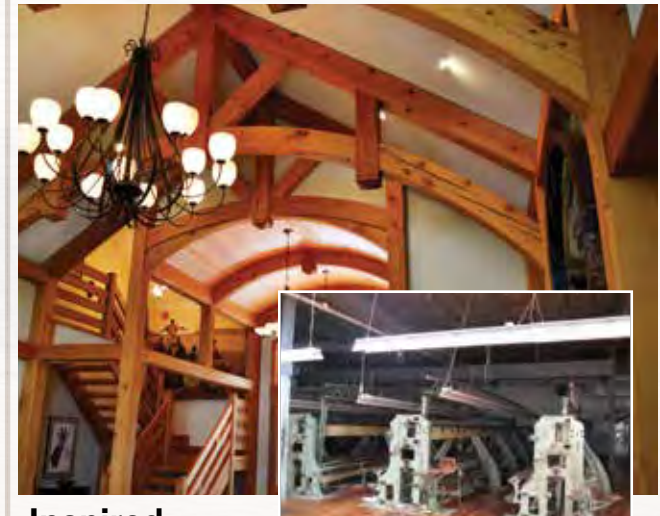
Historic.

"Wow!" is the most common exclamation from visitors to Daniel and Sheri's home when they see the outdoor living space. The large reclaimed timbers maintain original surfaces from their previous life as a timber drying shed in Myrtle Creek, OR located 100 miles from the home. A bit of fun history the couple enjoys sharing.



Authentic.

Taking a step back in time, the antique barn timbers with hand-hewn surfaces and original mortise pockets bring raw history amongst crisp colors and the open layout in a cozy, cottage home in the Finger Lakes. These timbers are organic and visceral, speaking in their own way to each person – even our co-workers can't resist running their hands across the old wood.



Inspired.

Character includes a variety of surfaces with antique timbers: smooth, rough-sawn, hand-hewn, wire-brushed, original, and more. The homeowners of this modern lakeside home opted for smooth Douglas fir timbers from a 1930's embroidery factory which subtly reveal their history with occasional bolt holes and ferrous staining.



pioneermillworks.com 800.951.WOOD

OUR WAY OF BUSINESS



At New Energy Works Timberframers we believe that good business is perhaps the best opportunity we have for a healthier, more sustainable planet. Great building practices go hand in hand with good business practices. We accept our role as community partners and believe we will do well if we do good. This philosophy suggests that there is more to business than just money, and that we need to give equal importance to:

People Those who we work with as coworkers, neighbors, clients, professionals, and suppliers near and far. We recognized that if we were going to spend more time at work than we do at home, we want our co-workers to be excellent people with good values and caring personalities – and they are just that. In the shop, or mill, or office, or on-site we have good people and partners, as so many clients have expressed to us through their own kind words.

Planet Business is one of the most powerful tools to help stem the flow from a changing, resource-limited Earth. We are emphatic about the efficiency of our structures, the materials they use, the utilities they consume in their lifetime, and the lifespan of a building.

Profit Thoughtful, fair business practices based on quality, creativity, hard work, and honesty suggest a fair return for the business that can then offer a better wage, security and benefits for our members and excellent value to our customers.

In New York in 1982, and in Oregon in 2008, we opened our doors with the idea of creating beautiful, energy efficient shelters. Now, more than thirty years later, we continue to be impressed with the passion our clients bring to the design and build process. Our enthusiasm for joinery remains unabated and we're still moved by the sight of a naked frame against the sky. We've witnessed aspects of our craft change significantly over the years. We're pleased to be at the cutting edge of our chosen profession, utilizing advances such as computer assisted design, 3D modeling, and CNC cut joinery, yet retaining a level of Old World craftsmanship and sustainable building methods that speak to us all.

Today, along with our sister company Pioneer Millworks, we employ over 115 timberwrights, designers, engineers, craftspeople, and community members. Building a dream home is a journey, one we're always excited to take with you, offering our experience and expertise along the way.



Timber Home Living

To subscribe to
Timber Home Living magazine,
call 800-234-8496.



For dates and locations to
The Log & Timber Home Show and University,
visit loghome.com/shows.



NEW ENERGY WORKS
design | timberframing | woodworks

Headquarters 585.924.3860
joinery@newenergyworks.com

West Coast 503.719.4800
studio@newenergyworks.com

New England 802.310.3546
mikeb@newenergyworks.com

Midwest 734.996.2600
drake@newenergyworks.com

See our Postcard of the Day here:
newenergyworks.com/postcards

800.486.0661
newenergyworks.com



NEW ENERGY WORKS
design | timberframing | woodworks



"We're thankful for thirty years of great clients, projects, and co-workers. Please enjoy this thirteen month collection of projects, visit us for many more on our website, and let us know how we can be part of yours."

*Jonathan Orpin
Founder*

newenergyworks.com

pioneermillworks.com

newwoodworks.com