



2019
CALENDAR



NEW ENERGY WORKS
design | timberframing | woodworks

Timber Home Living
timberhomeliving.com



© Don Cochran Photography



[See more of this project: newenergyworks.com/circleinasquare](https://newenergyworks.com/circleinasquare)

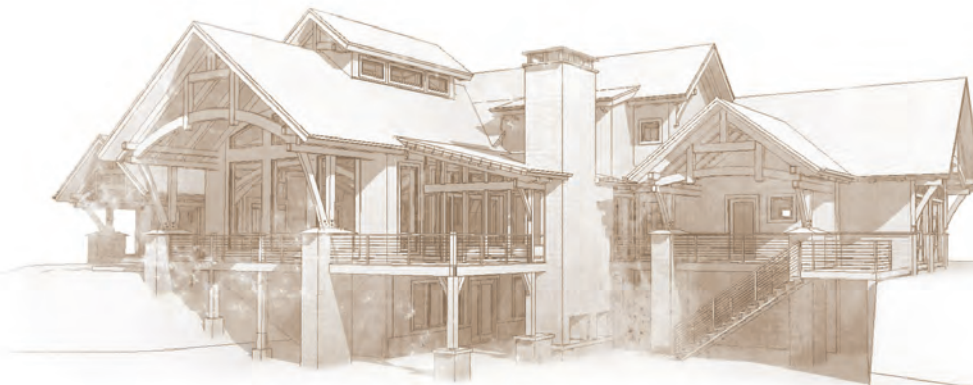
For those of you following along, this was the featured project for December in our 2018 calendar and it is the cover project for this year's calendar.

JANUARY

2019

SUN	MON	TUE	WED	THU	FRI	SAT
		1	2	3	4	5
		New Year's Day				
6	7	8	9	10	11	12
13	14	15	16	17	18	19
20	21	22	23	24	25	26
	Martin Luther King Jr. Day					
27	28	29	30	31		

Timber Home Living
timberhomeliving.com



Circle in a Square

The broad stroke design of this home harkens to sap houses and agricultural structures of the Northeast which inspired the inclusion of a clerestory, cylindrical silo-like stairwell, and site-harvested stone. It was important for the family of five to have a central living space that felt settled and intimate while being able to host guests. The resulting 36' x 36' great room is characterized by its "circle in a square" frame that is the core to the overall basket-like structure. Lower volumes are created, and dimensionality is woven in, with arched timber brackets and curving lines. The curves and arches were realized with a combination of double sawn solid timbers and curved, grain-matched glulams.

Bridgewater, Connecticut

Design & High-Performance Enclosure:

New Energy Works | 800.486.0661
newenergyworks.com

Builder:

Silvermine Development Corp.

203.744.2090

Engineer:

Fire Tower Engineered Timber

401.654.4600 | ftet.biz

"I cannot imagine a day when I will stop smiling at this."

—Shannon, homeowner



NEW ENERGY WORKS
design | timberframing | woodworks



© Loren Nelson Photography

 See more of this project: newenergyworks.com/thenewjewel

FEBRUARY

2019

SUN	MON	TUE	WED	THU	FRI	SAT
					1	2
						Groundhog Day
3	4	5	6	7	8	9
10	11	12	13	14	15	16
			Valentine's Day			
17	18	19	20	21	22	23
President's Day						
24	25	26	27	28		

The NEW Jewel

Little did Phil and Rocio know how right their timing was when they came to us and asked for a “small but perfect home”. By using a pure and simple form, a true jewel was built with the highest quality materials, super-insulated envelope, triple pane windows, and a high-efficiency heat pump. Additionally, the doors are hand-crafted, the cabinets are site-harvested walnut, the finishes and craftsmanship are detailed. Bonus here is the central skylight that allows natural light in along the length of home.

Dayton, Oregon

Design & Build: New Energy Works
800.486.0661 | newenergyworks.com

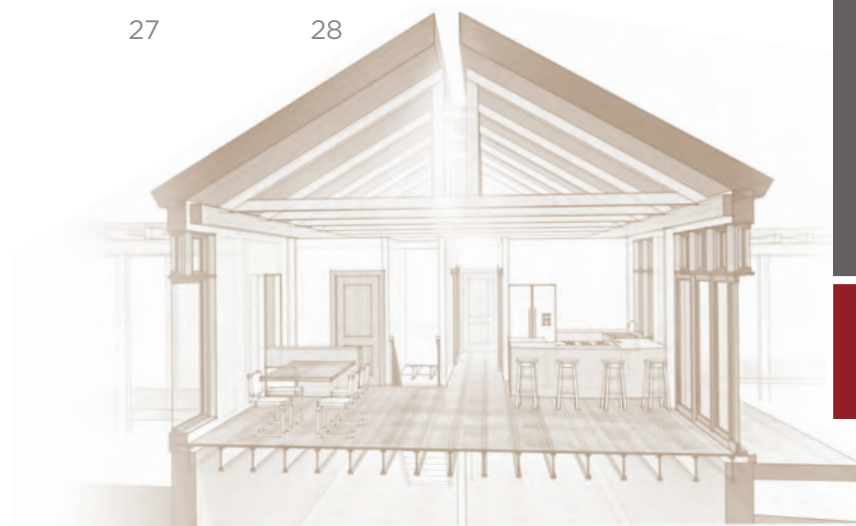
Engineer: Eclipse Engineering
503.395.1229 | eclipse-engineering.com

Reclaimed & Sustainable Wood:
Pioneer Millworks
800.951.9663 | pioneermillworks.com

“It is quite difficult to express the deep sense of gratitude we feel toward everyone that contributed to the Jewel. Our appreciation for the bundle of work, energy, and creativity that we currently reside in—the artistic, creative flair combined with real-life practicality is a major component of our place that we will love for many years to come.”

—Phil and Rocio, homeowners

Timber Home Living
timberhomeliving.com



NEW ENERGY WORKS
design | timberframing | woodworks



© Scott Hemenway

MARCH

2019

SUN	MON	TUE	WED	THU	FRI	SAT
					1	2
3	4	5	6	7	8	9
			Ash Wednesday			
10	11	12	13	14	15	16
Daylight Savings Time						
17	18	19	20	21	22	23
St. Patrick's Day			First Day of Spring			
24	25	26	27	28	29	30
31						

Expressive Volume

The high volumes of this great room are expressed with scissor trusses stretching from the main level, past the balcony to the vaulted ceiling with corbels that have a modern twist. Blackened steel accents the timber work with pipe fittings supporting chandeliers at the intersection of the scissor truss chords. Custom finishes highlight the Douglas fir timbers and contrast with the light tongue and groove ceiling.

Skaneateles, New York

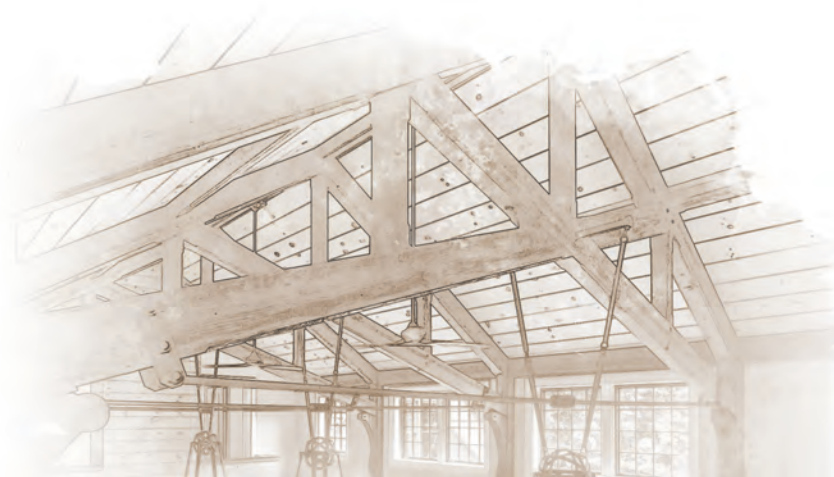
Architect: Holmes-King-Kallquist Architects & Associates | 315.476.8371
hkkarchitects.com

Builder: Kevin Rich Construction
315.685.0233 | kevinrichconstructionllc.com

“Holmes King Kallquist continues to challenge and inspire us—we are always grateful for the opportunity to collaborate with such professionals. For this home, integrated steel and timber trusses frame a comfortable and inviting space along the lake. Projects like these are why we love to work with talented architectural firms.”

—Eric Fraser, GM, Timber Frame Division, New Energy Works

Timber Home Living
timberhomeliving.com



NEW ENERGY WORKS
design | timberframing | woodworks



Neill Archer Roan © 2017 All Rights Reserved

 See more of this project: newenergyworks.com/foxfieldretreat

APRIL

2019

SUN	MON	TUE	WED	THU	FRI	SAT
	1	2	3	4	5	6
7	8	9	10	11	12	13
14	15	16	17	18	19	20
Palm Sunday					Good Friday Passover Begins	
21	22	23	24	25	26	27
Easter	Easter Monday (Canada) Earth Day					Passover Ends
28	29	30				



Foxfield Retreat

Modern living in an open layout was created via a linear floor plan that changes angle toward the rear of the house to accommodate a guest suite. Oversized windows encourage observance and enjoyment of the surrounding forest, marshlands, and beyond. Kiln dried Douglas fir king post trusses with angled struts were employed to form the frame. A blonde-toned stain mutes the inherent warm orange tones in the Douglas fir for cooler and cleaner lines within the living spaces.

Northeast Maryland

Architect: HapstakDemetriou
202.333.9038 | hd-ad.com

Builder: Winchester Construction
410.987.5905 | winchesterinc.com

Engineer: Fire Tower Engineered Timber
401.654.4600 | ftet.biz

“We put a lot of thought into wood species choices, and into the articulation of structural connections. In the end, we chose to hide the structural-steel within the body of the truss with only the finishing wood dowels showing. The execution and quality of the New Energy Works trusses were so exceptional that they became the main aesthetic driving force of the house.”

—Olivia Demetriou, FAIA, Architect

Timber Home Living
timberhomeliving.com



NEW ENERGY WORKS
design | timberframing | woodworks



© Chris Kendall Photography

 See more of this project: newenergyworks.com/crispcanvas

MAY

2019

SUN	MON	TUE	WED	THU	FRI	SAT
			1	2	3	4
5	6	7	8	9	10	11
12	13	14	15	16	17	18
Mother's Day						Armed Forces Day
19	20	21	22	23	24	25
	Victoria Day (Canada)					
26	27	28	29	30	31	
	Memorial Day					

Timber Home Living
timberhomeliving.com



Crisp Canvas

Blackened steel bottom chords and embedded metal connectors allow the custom finished Douglas fir trusses to define a high, open, and airy interior canvas by their repeating cadence along the floor plan. The home was inspired by traditional barns, common to the region, but with a modern take in the décor and large glass insets that celebrate the surrounding landscape.

Pine Plains, New York

Architect: Amalgam Studio, LLC
646.371.2025 | amalgam-studio.com

Builder: Black Oak Builders
518.329.3475 | blackoakbuilt.com

Engineer: Ross Dalland PE
845.331.0111 | rossdallandpe.com

“After collaborating with New Energy on several projects in recent years, I have found them to be one of the most progressive, energetic, and capable building and design companies out there. They have consistently delivered in ways that have exceeded my expectations and are a joy to work with.”

—Leathem Mehaffey, Black Oak Builders



NEW ENERGY WORKS
design | timberframing | woodworks



JUNE

2019

SUN	MON	TUE	WED	THU	FRI	SAT
						1
2	3	4	5	6	7	8
9	10	11	12	13	14	15
					Flag Day	
16	17	18	19	20	21	22
					First Day of Summer	
23	24	25	26	27	28	29
	St. John Baptiste Day (Canada)					
30	31					



Mohonk Mountain House

The Grove Lodge is nestled in a tranquil meadow within the Mohonk Mountain House resort. The six rooms and great room feature re-sawn industrial salvaged timbers customized with a multi-step finish, including a bit of charring, to give an old-world aesthetic to the lodge. The timbers follow the lines of the ceiling outlining the high vaulted spaces.

New Paltz, New York

Architect: AJA Architecture & Planning
518.792.1651 | ajaarchitecture.com

Builder: Mohonk Mountain House
855-883-3798 | mohonk.com

Reclaimed & Sustainable Wood:
Pioneer Millworks
800.951.9663 | pioneermillworks.com

“The challenge for this project was to develop a modern resort lodge with a historic sense of place and time. New Energy Works presented inspiring solutions to the overall composition of the interiors by their careful consideration of finishes and detailing of the timber frame. They delivered a superior product, worked in collaboration with the design team and construction teams, providing a seamless process.”

—Andrew Allison, AIA, Architect





DIANA PARRISH
design and photography

See more of this project: newenergyworks.com/bucolicgrace

JULY

2019

SUN	MON	TUE	WED	THU	FRI	SAT
	1	2	3	4	5	6
	Canada Day (Canada)			Independence Day		
7	8	9	10	11	12	13
14	15	16	17	18	19	20
21	22	23	24	25	26	27
28	29	30	31			

Timber Home Living
timberhomeliving.com



Bucolic Grace

Graceful country living with an energy-conscious mindset was at the core of the overall plan and design for this estate home. The center of the reclaimed oak timber frame plays a star role with hammer beam trusses honoring the rural vernacular. Integrated curves and custom pendant details invigorate the classic style. The traditional stone and timber materials connect the home to the site, while solar and geothermal systems provide modern efficiency.

Greensboro, North Carolina

Design & High Performance Enclosure:

New Energy Works | 800.486.0661
newenergyworks.com

Reclaimed & Sustainable Wood:

Pioneer Millworks
800.951.9663 | pioneermillworks.com

“Our experience with New Energy Works was fantastic from start to finish. The quality of the reclaimed wood they found for our home, as well as the precision engineering of the wood is unsurpassed. Anyone who has seen our home marvels at the beauty of it and those who understand wood, marvel at the workmanship.”

—Ruth and Jeff, homeowners



NEW ENERGY WORKS
design | timberframing | woodworks



AUGUST

2019

SUN	MON	TUE	WED	THU	FRI	SAT
				1	2	3
4	5	6	7	8	9	10
11	12	13	14	15	16	17
18	19	20	21	22	23	24
25	26	27	28	29	30	31

Beach House Bliss

Hand hewn timbers were joined in a traditional truss style reminiscent of simple barn forms to give volume, substance, and a story to the main living area of this family vacation home on the Cape. Expressive pops of color and layers of textures against the crisp backdrop create a cohesive environment with a fresh and coastal aesthetic. A favorite spot on the property is the outdoor poolside timber frame cabana which provides shelter for a lounge, dining area, and fireplace.

Osterville, Massachusetts

Architect: Hutker Architects
508.540.0048 | hutkerarchitects.com

Builder: Cataldo Custom Builders
508.548.1133 | cataldobuilders.com

Interior Design: Jennifer Palumbo, Inc
617.332.1009 | jenniferpalumbo.com

“I remember stopping by after the raising to find the frame standing alone with nothing around it. It was so cool to see that the timbers weren't just aesthetic, but structural; my dream of a barn-inspired home was really taking form. Also, the finish on the timbers is so great—so natural and perfect. Your team did a tremendous job.”

—Jennifer, Homeowner & Interior Designer

Timber Home Living
timberhomeliving.com



NEW ENERGY WORKS
design | timberframing | woodworks

Neill Archer Roan © 2018 All Rights Reserved



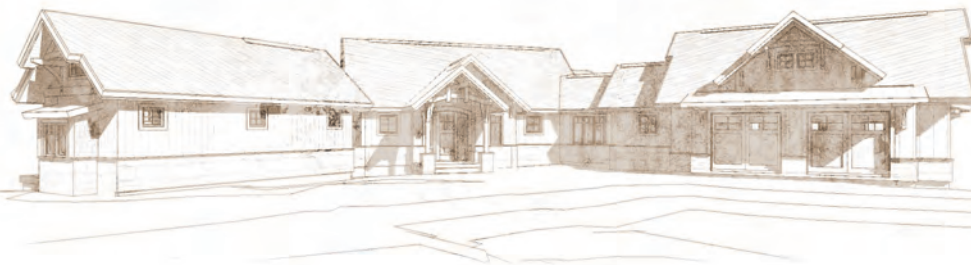
 See more of this project: newenergyworks.com/ravineaerie

SEPTEMBER

2019

SUN	MON	TUE	WED	THU	FRI	SAT
1	2	3	4	5	6	7
	Labor Day					
8	9	10	11	12	13	14
Grandparents Day Yom Kippur Begins	Yom Kippur Ends					
15	16	17	18	19	20	21
22	23	24	25	26	27	28
	First Day of Autumn					
29	30					
Rosh Hashanah Begins						

Timber Home Living
timberhomeliving.com



Ravine Aerie

There are long valley views to one side and close ravine views to the other of this unique site in Virginia. The home was organized in a “Y” shape to take advantage of all views. The great room overlooks each, with a screen porch to one side giving singular focus to the steep ravine. A condensed, craftsman style timber frame design balances the series of volumes and living spaces within the home.

Covington, Virginia

Design & High Performance Enclosure:

New Energy Works | 800.486.0661
newenergyworks.com

Builder: Commonwealth Contracting Services
540.862.5800

Woodwork: NEWwoodworks
585.924.3860 | newwoodworks.com

Reclaimed & Sustainable Wood:
Pioneer Millworks
800.951.9663 | pioneermillworks.com

“ We were drawn to New Energy Works by the curves incorporated in their timber frames. We now live in a completely accessible, one of a kind, work of art! From preliminary design through construction documents, their team was professional and always helpful to us and our general contractor. ”

—Tim and Tammy, homeowners



NEW ENERGY WORKS
design | timberframing | woodworks



See more of this project: newenergyworks.com/afamilyretreat

OCTOBER

2019

SUN	MON	TUE	WED	THU	FRI	SAT
		1	2	3	4	5
		Rosh Hashanah Ends				
6	7	8	9	10	11	12
13	14	15	16	17	18	19
	Columbus Day Thanksgiving Day (Canada)					
20	21	22	23	24	25	26
27	28	29	30	31		

Halloween



Timber Home Living
timberhomeliving.com

A Family Retreat

We knew Dan and Laurie's project would be a multi-generational retreat, a central gathering spot for family and friends. Plans evolved to include open public spaces on both the main and lower levels, balanced by private areas on the ends of the home which allow folks to enjoy a quiet spot or step inwards to join the party. The steep build site overlooks Canandaigua Lake and came with strict site constraints, driving the overall siting of the home down 'into' the land but still well above the water. Glass wraps the corners of the living area for 180-degree views of the lake.

Canandaigua Lake, New York

Design & Build: New Energy Works
800.486.0661 | newenergyworks.com

Woodwork: NEWwoodworks
585.924.3860 | newwoodworks.com

Reclaimed & Sustainable Wood:
Pioneer Millworks
800.951.9663 | pioneermillworks.com

“We've taken to calling our house 'Alpine chic'. New Energy Works is able to fit anyone, any site, any style with a combination of design and function—it's why we picked you guys.”

— Dan and Laurie, homeowners



NEW ENERGY WORKS
design | timberframing | woodworks



© Mary Buttolph Photography

 See more of this project: newenergyworks.com/thelodge

NOVEMBER

2019

SUN	MON	TUE	WED	THU	FRI	SAT
					1	2
3	4	5	6	7	8	9
		Election Day				
10	11	12	13	14	15	16
	Veteran's Day Remembrance Day (Canada)					
17	18	19	20	21	22	23
24	25	26	27	28	29	30

Thanksgiving

Timber Home Living
timberhomeliving.com

The Lodge

Known simply as The Lodge, this 25,000 sq ft conference center is one of the largest timber frames in New York state. The Douglas fir king post trussed frame was raised in four stages in coordination with the overall build plan for the Welch Allyn Conference Center. The flanking multi-level spaces are connected by a more human scale timber frame corridor. There is plenty of open meeting and eating spaces along with conference areas within the Center, but the timber frame Lodge is best known for specializing in weddings, galas, fundraisers, and parties.

Skaneateles, New York

Design & Build: VIP Architecture
315.471.5338 | vipstructures.com

“This project is a bit of a throwback as we raised it in the late 1990's, but it is a vivacious event space and we simply couldn't resist sharing this cool, recent image.”

—Jonathan Orpin, Founder,
New Energy Works



NEW ENERGY WORKS
design | timberframing | woodworks



© Don Cochran Photography

 See more of this project: newenergyworks.com/timbergestalt

DECEMBER

2019

SUN	MON	TUE	WED	THU	FRI	SAT
1	2	3	4	5	6	7
						Pearl Harbor Remembrance Day
8	9	10	11	12	13	14
15	16	17	18	19	20	21
						First Day of Winter
22	23	24	25	26	27	28
Hanukkah Begins		Christmas Eve	Christmas Day	Boxing Day (Canada)		
29	30	31				

Hanukkah Ends

New Year's Eve



Timber Home Living
timberhomeliving.com

Timber Gestalt

Timber work is featured in every part of this property, from the main entry and great room to the porches, pool house, and tennis pavilion, tying each component together into a cohesive estate. The kiln dried Douglas fir timbers received rough sawn texturing and draw knife edges prior to installation. Scissor king post trusses grace exterior gable ends on the main house and form the pool house open-air pavilion, while modest corbel details add another bit of consistency from the living space beams to the screen porches and terrace.

Greenwich, Connecticut

Architect: Kenneth Nadler Architects
914.241.3620 | kennethnadlerarchitects.com

Builder: Southlake Builders Ltd.
914.205.3037 | southlakebuildersny.com

“Each team member at New Energy Works, from the engineers to the timber framers that made and raised the frame, shared skills and knowledge that helped the project go smoothly. The timber work really ties together the structures on the estate. The high level of craftsmanship along with the custom finish—you executed exactly what the homeowners wanted.”

—Chris Amundson, Southlake Builders




NEW ENERGY WORKS
design | timberframing | woodworks



Still taken by Jake Orpin from drone footage of the raising.

Courtesy of Mount Angel Abbey



 We've put together a blog post and a video of the day that you are welcome to enjoy: newenergyworks.com/benedictinebrewery

JANUARY

2020

SUN	MON	TUE	WED	THU	FRI	SAT
			1	2	3	4
			New Year's Day			
5	6	7	8	9	10	11
12	13	14	15	16	17	18
19	20	21	22	23	24	25
	Martin Luther King Jr. Day					
26	27	28	29	30	31	

Timber Home Living
timberhomeliving.com



Benedictine Brewery

Over 100 volunteers—monks, seminarians, carpenters, timber framers, and community members—helped hand-raise the frame for the Mount Angel Abbey's Benedictine Brewery. The timbers themselves came from the monastery's own forests and include 310+ pieces, six bents, and a footprint of 80' x 40' x 24' to the ridge. Both the brewery space and the tasting room are replete with craft of wood, brew, and community.

Mt. Angel, Oregon

Architect: Soderstrom Architects
503-228-5617 | sdra.com

Builder: Chris Bischoff, CAB Construction,
Mt Angel | bischoff@mtangel.net

Engineer: Eclipse Engineering
503.395.1229 | eclipse-engineering.com

“This raising is a ton of right in a wrong way world. It fits right in with the mission of the brewery (support the Abbey, support local charities, support local economics), but it's a lot more than that. It feels like making a change for good and right one community step at a time.”

—Chris Jones, Project Manager for the Abbey



NEW ENERGY WORKS
design | timberframing | woodworks



Photo courtesy of the Timber Framers Guild



CHOOSING A PARTNER

Drawing from our long history, and the experiences our clients and professional partners have shared, we'd like to offer a few suggestions on how to find the right timber frame partner for your project.

THE GUILD Consider a timber framer who is involved with the Timber Framers Guild. At the Guild conferences, meet-ups, committee meetings, and publications, two important things occur: we learn and we share. This makes us better professionals and hones our craft. In both cases our clients win. And when you do consider a Guild timber framer, don't hesitate to ask if they attend the conferences. Do they send their craftsmen and their designers? Do they give, as well as receive? Visit www.tfguild.org to learn more about our industry organization.

DESIGN Hire an architect! Many of the projects in this very calendar were designed by independent architects. Read the design contract carefully. Architecture is a sacred thing, given not only how much money you'll spend, but how long your house will "live" on its site and how long you will live in it—wow—that's a great deal of responsibility. If the design fee seems like a hell of a deal, too good to be true, it likely is. Design should be by architects. It should be custom to you, your needs, and your site.

For many people who want a timber frame, hiring a timber frame company with in-house design capacity is valid. This is where you need to dig in to the timber framers on your short list for the details: What makes the in-house architect or designer qualified? What exactly is included in your design proposal—and what is not? Is a site visit included? Can you see an example of work at each level: schematic, design development, and construction documentation? Is checking with the local building code official included? Is engineering included, and if not, how will that be handled?

Perhaps most important of all: do you have the rights to the plans if you decide to not use that particular timber framer? Our own design teams on both coasts represent a vital and thrilling part of our business and we like to say that our job is "to bring the house inside of you—out," so you can see what it looks like before you build. It's your house, you should be able to use the drawings that you've paid for, even if you don't choose us to craft it.

FABRICATION It doesn't really matter whether you choose a shop with a complex CNC-machine or one that uses only hand-tools; both can perform well. The key is the design aesthetic, the structural details, the quality and option of timbers, and the raising itself. Find a partner who can handle the complex—one who can integrate, and execute the critical details of your design.



Engineering also comes into play here. Both legally and ethically, timber frames should adhere to a set of carefully worked out and nationally accepted standards. We are legally required to give you timbers that meet 3rd-party grading rules, and the joinery should withstand scrutiny by a qualified professional engineer. These guidelines vary tremendously based on what seismic zone you are in, what your snow load is, and the particular span and details of the timber frame itself.

Discuss timber species, grades, and dryness. You should ask questions about all of these, and not settle for what seems like a glossing over or pat answer. Species are plentiful and grade is about structure and looks. Both are somewhat design decisions. Dryness, though, is simply financial and you should be fully aware of the trade-offs between green timber that will shrink/check the most, and other options that will be more predictable.

RAISING This is another area where there are a wide range of choices. For 30 years, we've raised our own frames. Generally, a builder-dealer or a rough carpentry crew does not have the same efficacy, precision, quality-control, or safety as a well-trained crew of timber framers who work together as a team every day. For us, it is truly the raising, done by those who have worked hard to design, engineer, and cut the frame that make this the best construction job in the world.

ENCLOSURE We're big believers in the longevity and performance of the shell around your timber frame. And now that so many of our projects are hybrid, it is more important than ever to understand the options for wall and roof construction to increase comfort, lower bills, and place less stress on our planet's resources. Be sure to ask what enclosure options are available.

COMPANY CULTURE Look at the company culture, organization, and health. Look for a company that is robust enough to overcome the many obstacles life and business throw, but accessible enough to speak to the owner or group leader on a regular basis.

It's true, these tips turn out to be self-serving. We like our company's attributes: 30 years in the industry, board-level involvement in the Guild, facilities on both coasts, long time coworkers who rank as the best in the industry, 80% of our work coming from repeat or referral. More than that, we appreciate who we are: an employee-owned company whose decision making is based on the Triple Bottom Line of People, Planet, and Profit, understanding that it takes an eye on all three to fulfill our responsibilities to you, to our coworkers, and to the future.

Ask us anything. We'd appreciate it.



WE BELIEVE THAT WE DO WELL WHEN WE DO GOOD.

New Energy Works operates on the triple bottom line—a simple belief that people, planet, and profit work together to ensure a better future. We give to our local and global communities. Our coworkers are more than just employees, they're part of what makes our company successful. We are an employee owned company. We truly care about our craftsmen, and they truly care about your project.

When you work with us, you are purchasing products made in a shop that runs on solar power and is heated from our own timber scrap. Our efforts at reclaiming wood have processed over 1 million board feet a year for the past 28 years, saving this wood from landfills, incineration, and rot. Our Earth is a place we want to leave well for the next generation through buildings that are energy-efficient and enduring.

When we take care of our people and our planet, we are more profitable. This enables us to invest in efforts that make a difference to our workers' families and our local and global communities, creates a healthier planet, and most importantly builds a thoughtful company that thrives on quality partnerships.



NEW ENERGY WORKS

design | timberframing | woodworks

HEADQUARTERS

1180 Commercial Dr.
Farmington, NY 14425
585.924.3860

joinery@newenergyworks.com

WEST COAST

2609 SE 6th Ave.
Portland, OR 97202
503.719.4800

studio@newenergyworks.com

NEW ENGLAND

802.310.3546

mikeb@newenergyworks.com

MIDWEST

734.996.2600

drake@newenergyworks.com

800.486.0661 | newenergyworks.com

POSTCARD OF THE DAY: newenergyworks.com/postcards

Timber Home Living
timberhomeliving.com

To subscribe to
Timber Home Living magazine
call 800-234-8496

For dates and locations to
The Log & Timber Home Show and University
visit loghome.com/shows





Photo from raising day of the Flanders Performance Park Bandshell in the Adirondacks with Andrew Chary Architect, Sellers Treybal Structural Engineers, and the Tupper Lake Community.



NEW ENERGY WORKS
design | timberframing | woodworks

“Community—whether we’re talking about our local, industry, craftsmen, or global communities—is a driver for what we do. None of us can go it alone, nor will we make it if we try. Perhaps that’s why we love community raisings so much. Seeing the choreography of many craftsmen working together, the fruition of a well-designed structure from many minds, and the melding of ideas from stakeholders—raising day is seeing community in action.”

—Jonathan Orpin, Founder, New Energy Works